



RECON 360[®] TL BIPOD

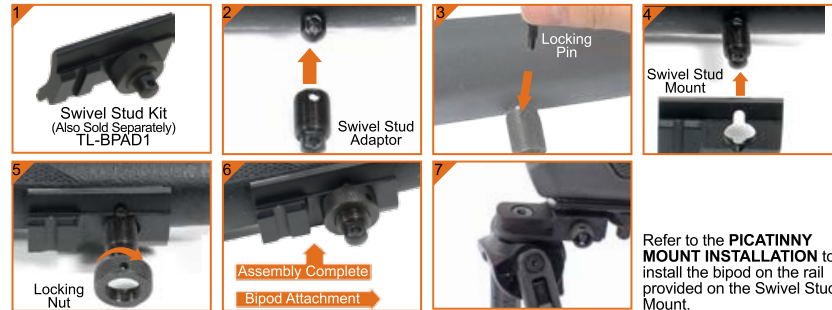
OWNER'S MANUAL

US. PAT. D758522; US. PAT. D758521

MUB029012001



SWIVEL STUD ADAPTOR INSTALLATION



M-LOK[®] MOUNT INSTALLATION



Position the T-Nut as shown to the left and correctly seat the base into the corresponding M-LOK[®] slots. Make sure the base is seated evenly.

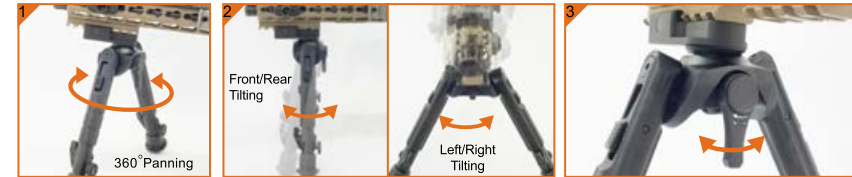
While holding the base firmly in place, use the supplied Hex wrench to turn the two Hex screws clockwise until both M-LOK[®] T-Nuts are perpendicular to the M-LOK[®] Slots and begin to engage the handguard. Continue until tightened. Recommended torque value: 30 in-lb.

PICATINNY MOUNT INSTALLATION



Loosen the thumb nut enough for the mount's squared cross bolt to seat evenly into the desired Picatinny slot. Once seated, securely tighten the thumb nut.

PANNING AND TILTING



The inner smart spherical structure of the bipod base allows full 360 degree rotation.

Multi-axial tilting allows for 15 degree tilt forward, rearward, left and right.

Fine-tunable tension adjustment lever easily applies the desired amount of tension to the bipod's 360° panning & 15° forward, rearward, left, and right tilt.

3 POSITION FOLDING



Press down and hold the Posi-lock release.

Turn the bipod leg to the desired position, releasing the Posi-lock once done to lock the bipod leg into place.

To position the legs to face rearward and away from the muzzle rotate the base along its panning axis 180 degrees.

LEG EXTENSION/RETRACTION



Make sure the Locking Thumb Wheel is fully released by turning it counter-clockwise.

Extend the bipod leg by pulling it out of the leg housing. Set it at any of the pre-cut extension notches. Or, extend to any location in between notches. Tighten the Locking Thumb Wheel by turning it clockwise to lock the leg.

To retract the bipod leg, loosen the Locking Thumb Wheel first. Press down the Leg Retraction Clamp before you push the extended leg upward into the housing.